

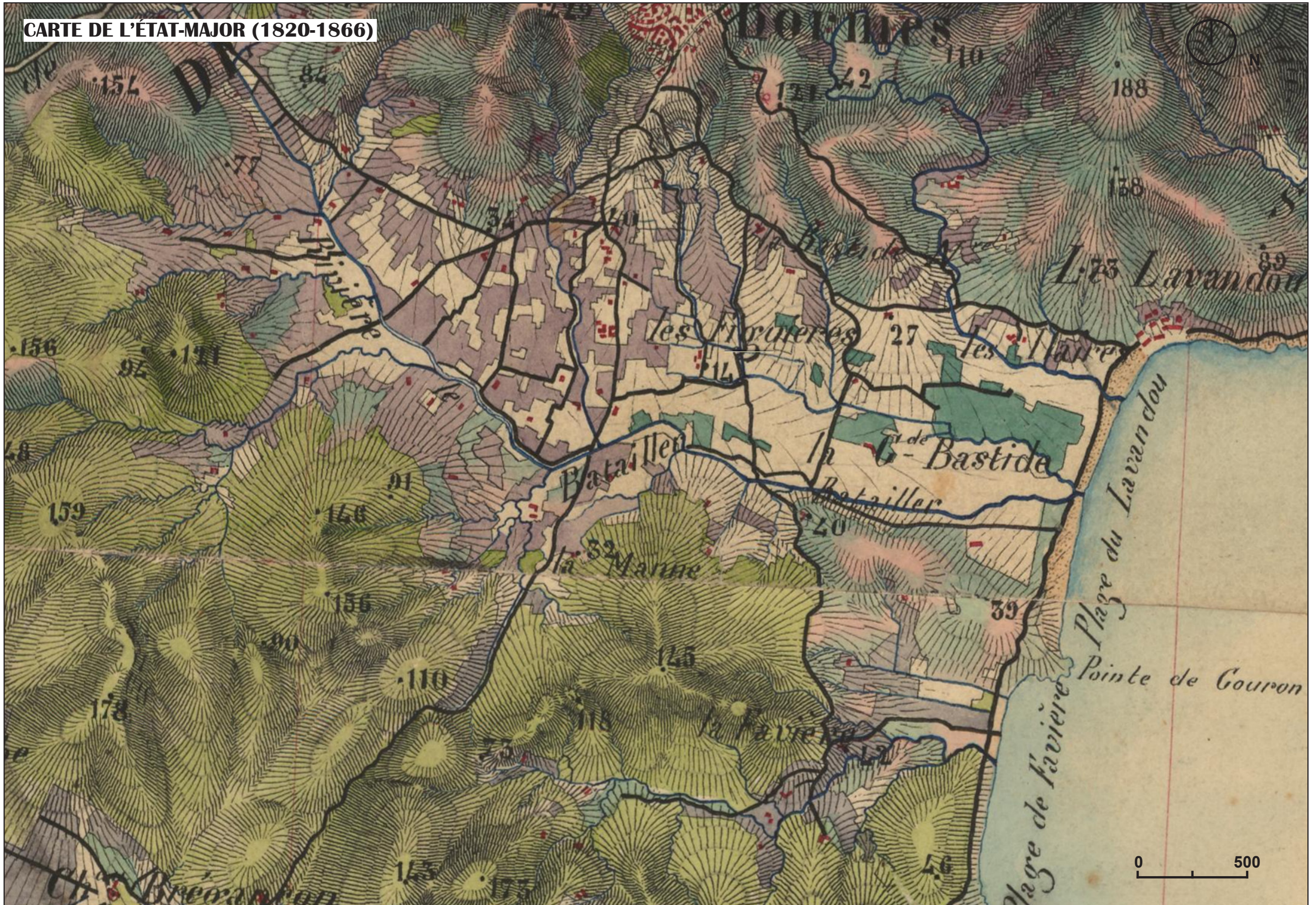


# LE LAVANDOU

ENTRE BALNÉARITÉ ET AGRICULTURE



CARTE DE L'ÉTAT-MAJOR (1820-1866)





**PHOTOGRAPHIE AÉRIENNE (1950-1965)**



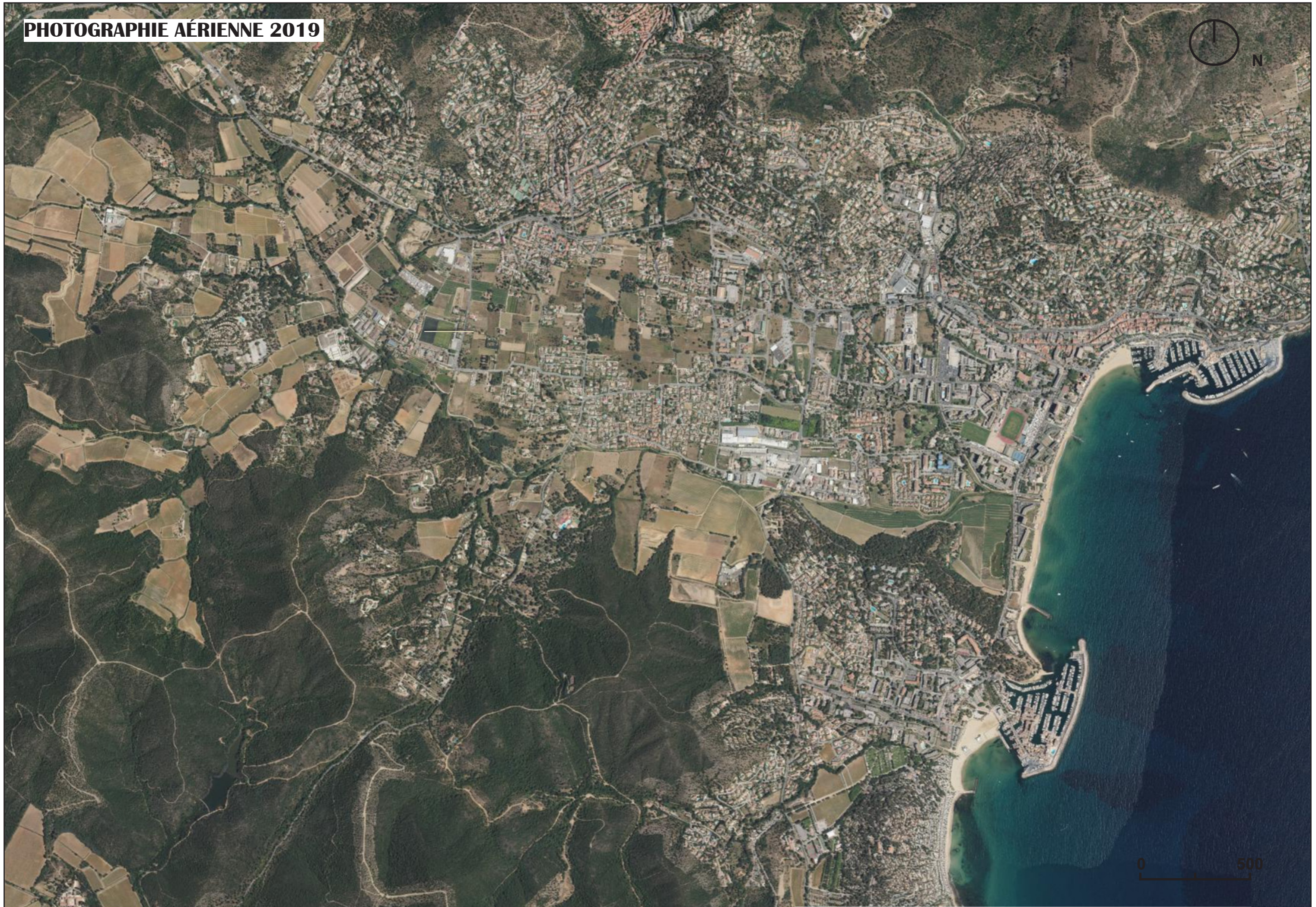
0 500



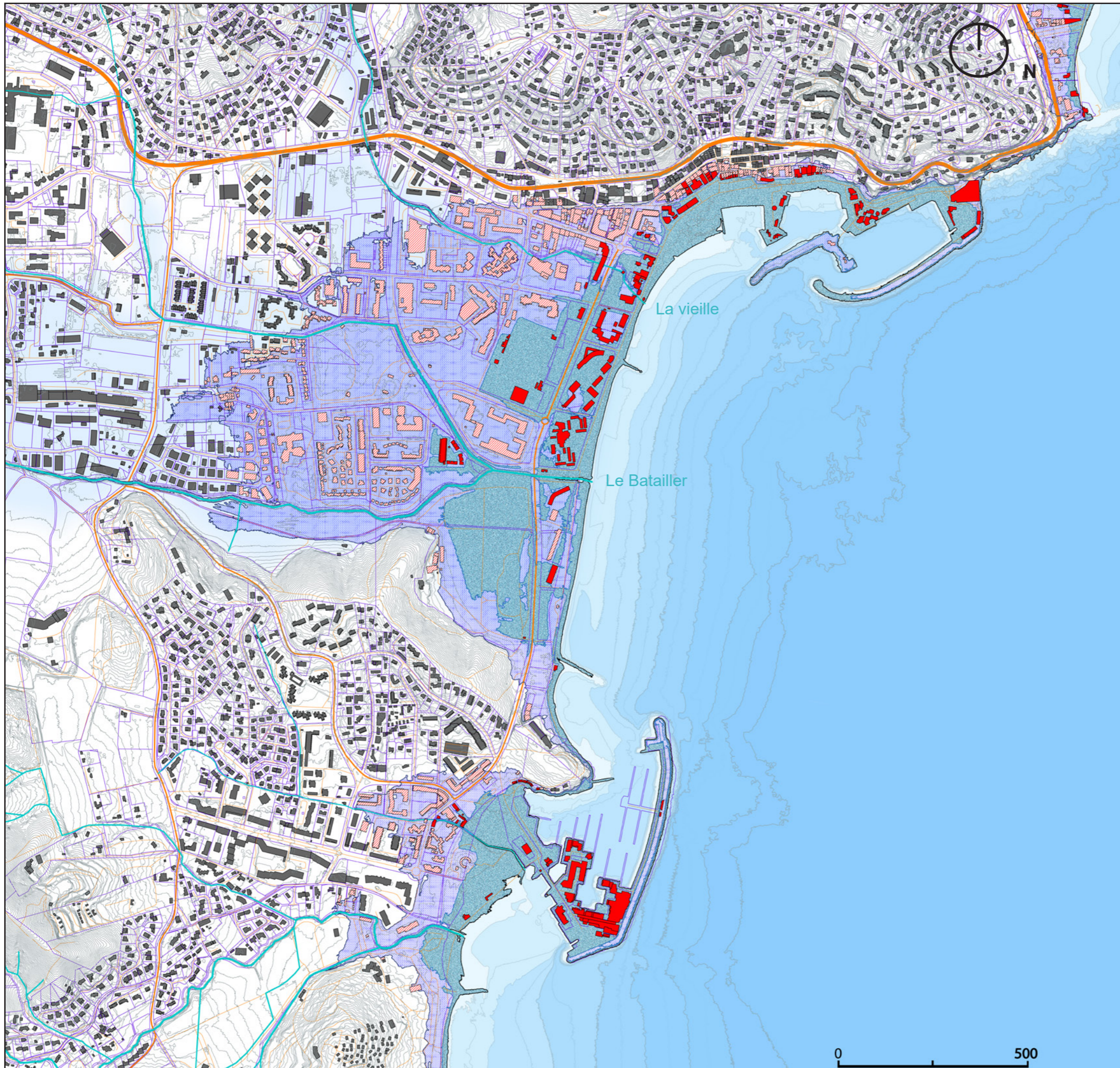
PHOTOGRAPHIE AÉRIENNE 2019



0 500







## CONSÉQUENCES DE L'URBANISATION MASSIVE DE LA PLAINE :

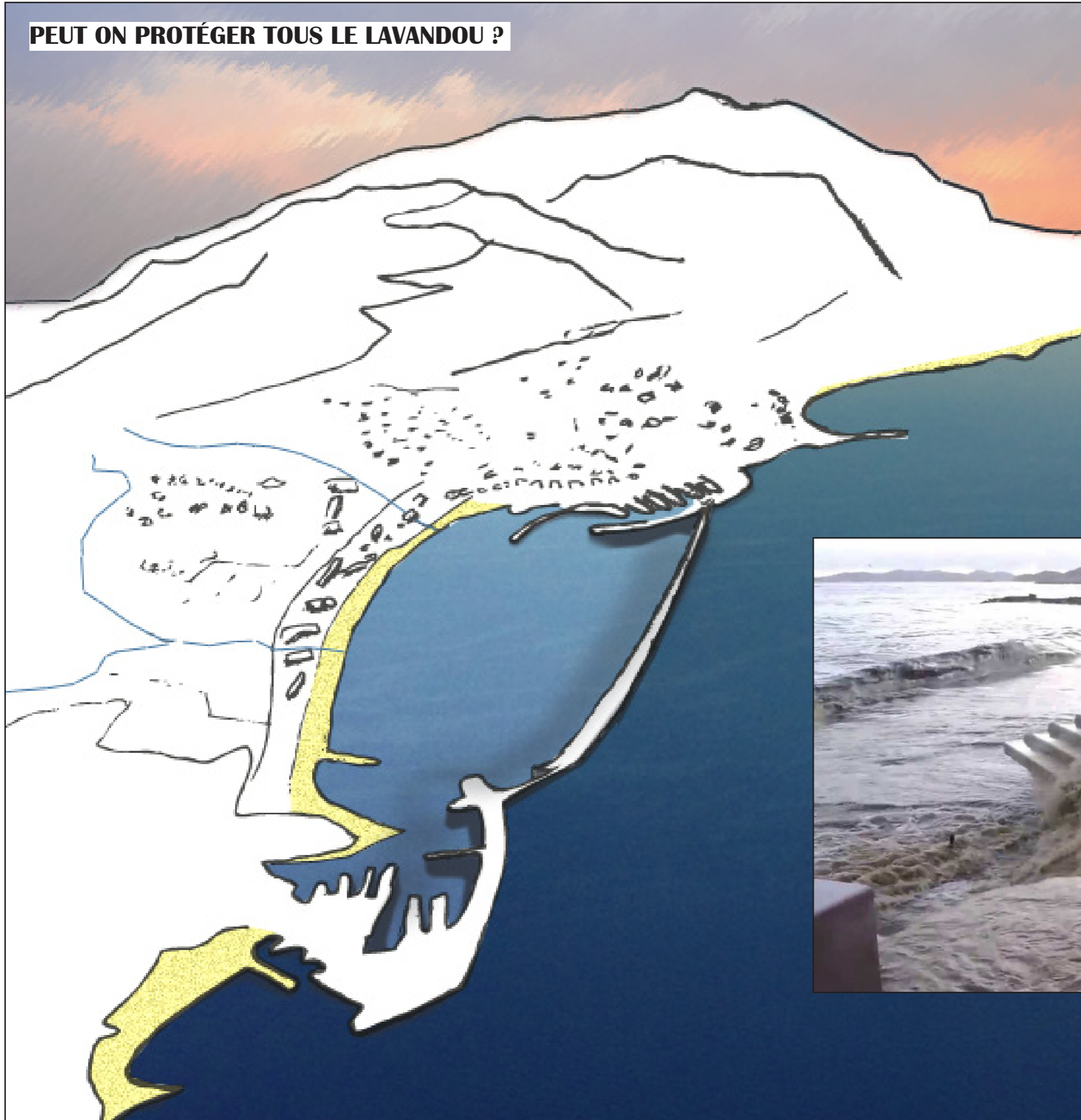
### LÉGENDE :

- Montée des eaux +2mètres
- Submersion
- Inondation
- Bâti touché par la montée des eaux
- Bâti exposé au risque de submersion

	Montée des eaux	Montée des eaux + submersion
Surface construite perdu	98 774m <sup>2</sup>	367 150 m <sup>2</sup>



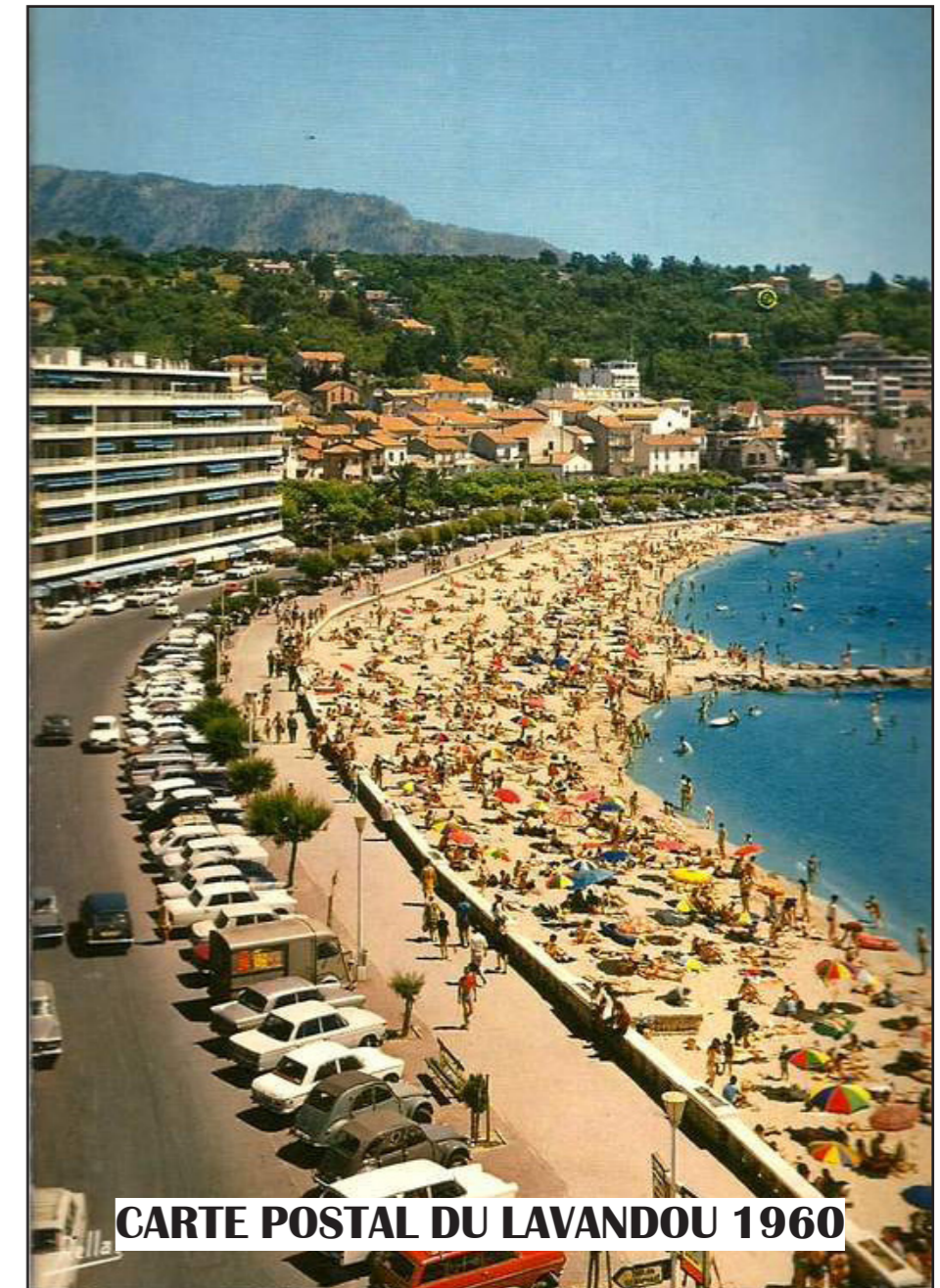
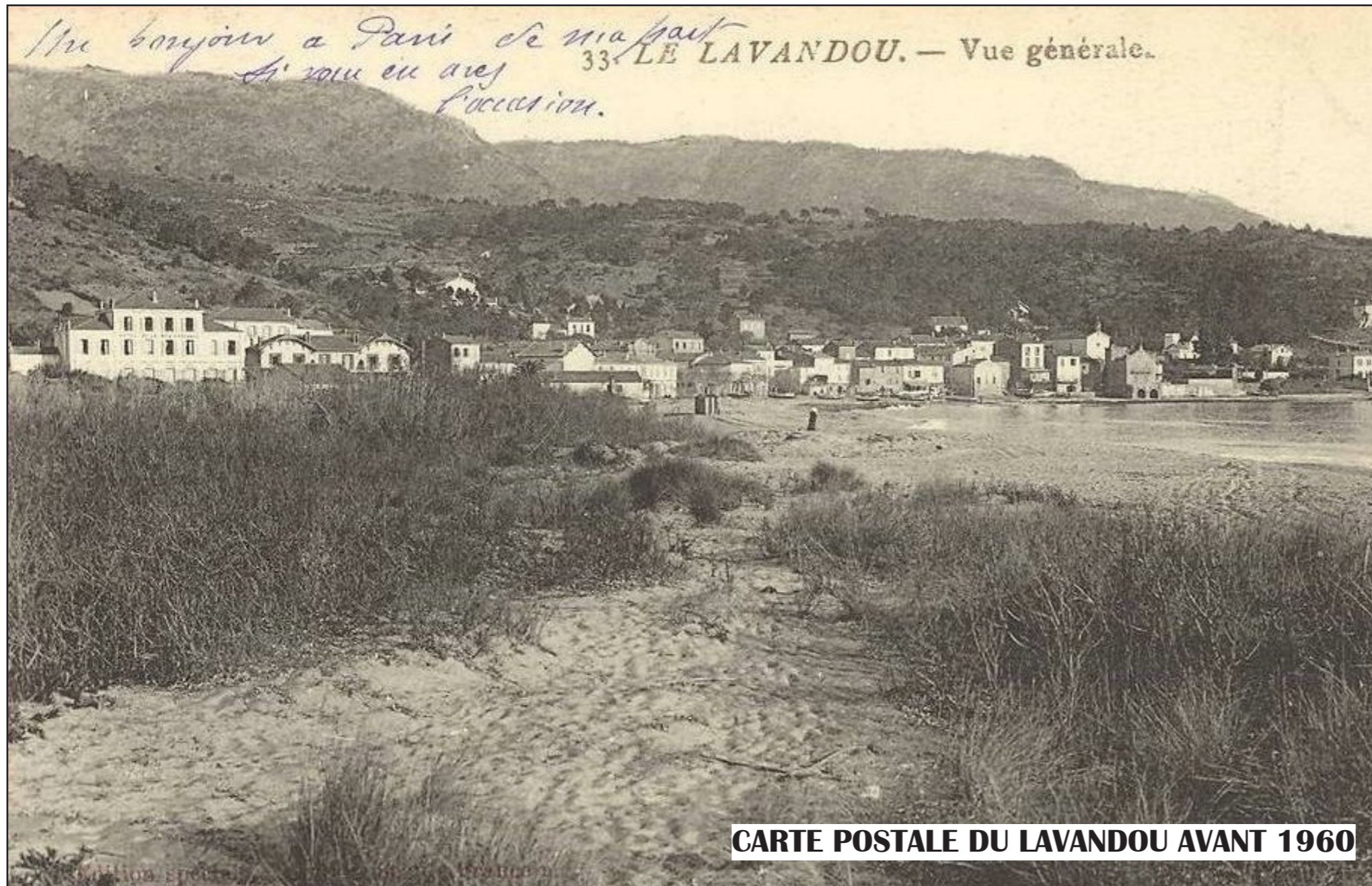
**PEUT ON PROTÉGER TOUS LE LAVANDOU ?**



**INNONDATION JANVIER 2014**




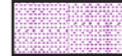



**REMISE EN CAUSE DU MODÈLE BALNÉAIRE DES ANNÉES SOIXANTE**

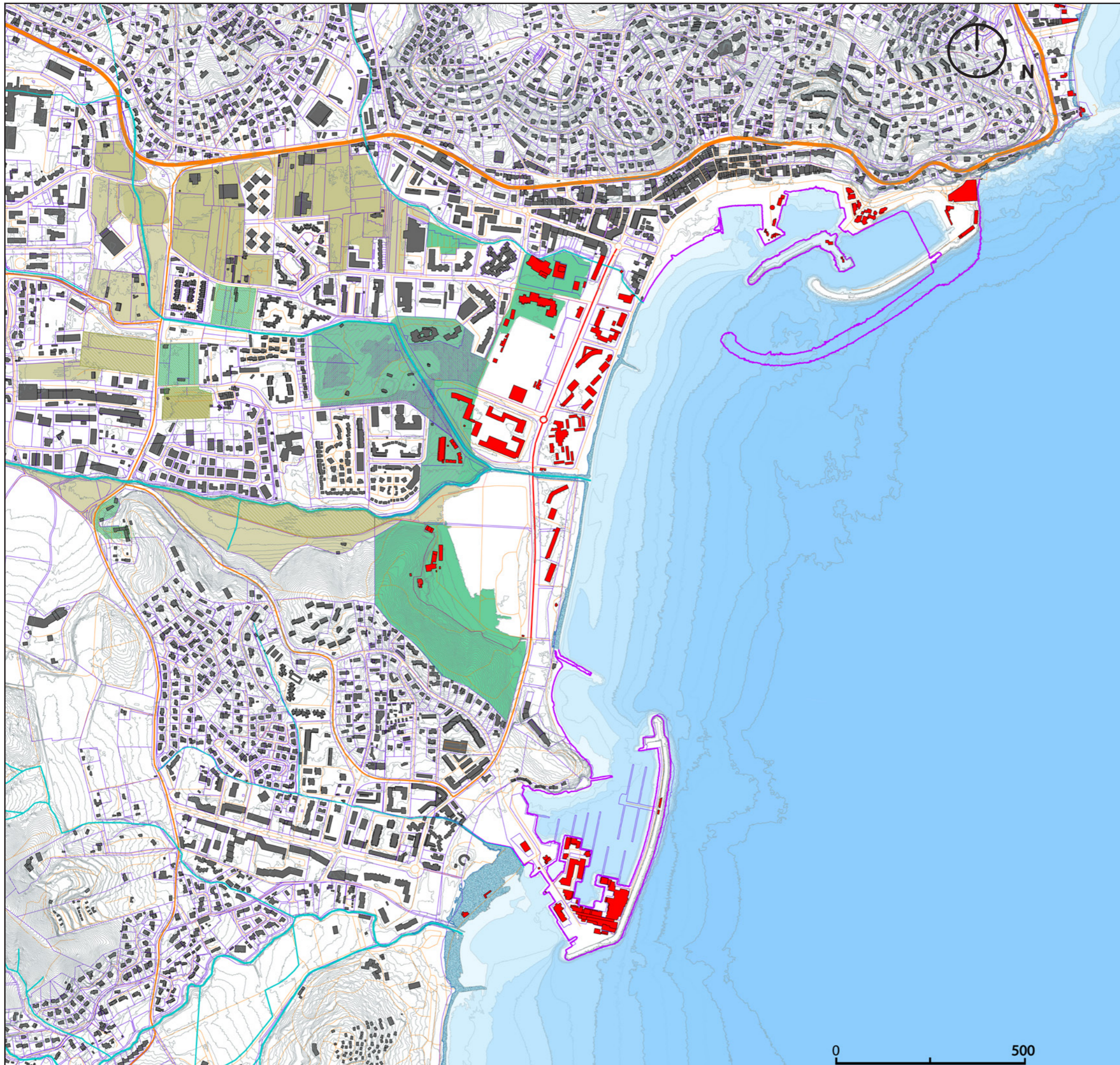




# REPENSER LE RAPPORT AU LITTORAL À L'HORIZON DE 2050 :

## LÉGENDE :




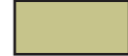

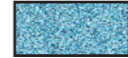
-  destruction
-  zones potentiels de reconstruction
-  Zones vertes
-  Zones agricoles
-  Montée des eaux +1mètre
-  réhaussement des quais

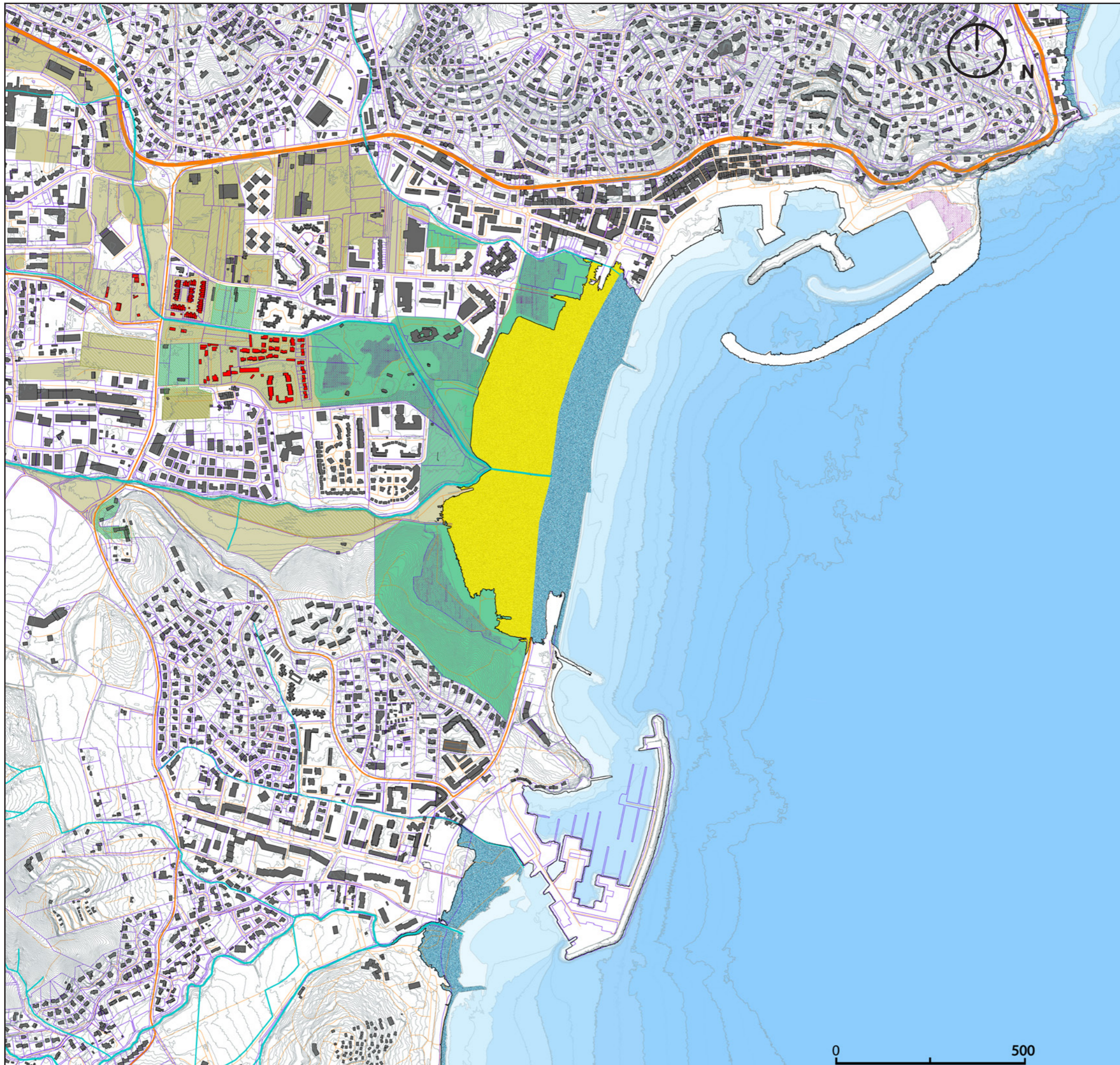




# REPENSER LE RAPPORT AU LITTORAL À L'HORIZON DE 2100 :

## LÉGENDE :

-  destruction
-  zones potentiels de reconstruction
-  Zones vertes
-  Zones agricoles
-  Dune
-  Montée des eaux +2mètres













# LE LAVANDOU GRENIER À BLÉ DE LA RÉGION VAROISE :

## LÉGENDE :

-  Forêts
-  Zones agricoles
-  Montée des eaux +2mètres
-  Dune

